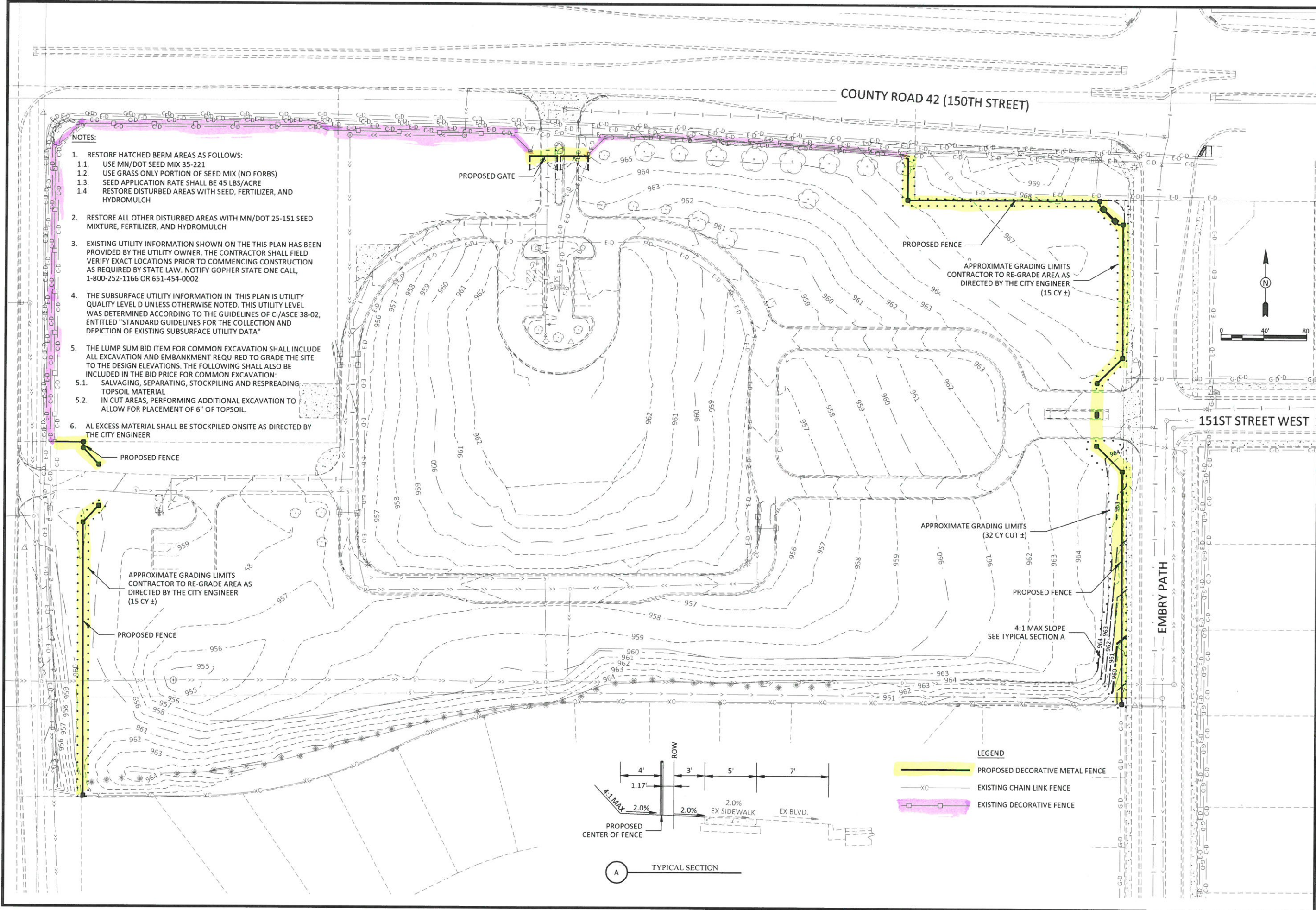


CITY OF APPLE VALLEY, MINNESOTA
LEBANON CEMETERY BOUNDARY FENCE
CITY PROJECT 2019-121
PROPOSED GRADING PLAN

NO.	REVISION	DATE

SURVEY	JAR
DRAWN	JLS
DESIGNED	JLS
APPROVED	BSA
PROJ. NO.	2019-121



- NOTES:**
- RESTORE HATCHED BERM AREAS AS FOLLOWS:
 - USE MN/DOT SEED MIX 35-221
 - USE GRASS ONLY PORTION OF SEED MIX (NO FORBS)
 - SEED APPLICATION RATE SHALL BE 45 LBS/ACRE
 - RESTORE DISTURBED AREAS WITH SEED, FERTILIZER, AND HYDROMULCH
 - RESTORE ALL OTHER DISTURBED AREAS WITH MN/DOT 25-151 SEED MIXTURE, FERTILIZER, AND HYDROMULCH
 - EXISTING UTILITY INFORMATION SHOWN ON THIS PLAN HAS BEEN PROVIDED BY THE UTILITY OWNER. THE CONTRACTOR SHALL FIELD VERIFY EXACT LOCATIONS PRIOR TO COMMENCING CONSTRUCTION AS REQUIRED BY STATE LAW. NOTIFY GOPHER STATE ONE CALL, 1-800-252-1166 OR 651-454-0002
 - THE SUBSURFACE UTILITY INFORMATION IN THIS PLAN IS UTILITY QUALITY LEVEL D UNLESS OTHERWISE NOTED. THIS UTILITY LEVEL WAS DETERMINED ACCORDING TO THE GUIDELINES OF CI/ASCE 38-02, ENTITLED "STANDARD GUIDELINES FOR THE COLLECTION AND DEPICTION OF EXISTING SUBSURFACE UTILITY DATA"
 - THE LUMP SUM BID ITEM FOR COMMON EXCAVATION SHALL INCLUDE ALL EXCAVATION AND EMBANKMENT REQUIRED TO GRADE THE SITE TO THE DESIGN ELEVATIONS. THE FOLLOWING SHALL ALSO BE INCLUDED IN THE BID PRICE FOR COMMON EXCAVATION:
 - SALVAGING, SEPARATING, STOCKPILING AND RESPREADING TOPSOIL MATERIAL
 - IN CUT AREAS, PERFORMING ADDITIONAL EXCAVATION TO ALLOW FOR PLACEMENT OF 6" OF TOPSOIL.
 - ALL EXCESS MATERIAL SHALL BE STOCKPILED ONSITE AS DIRECTED BY THE CITY ENGINEER

S:\public-works\private\Projects\2019-121 Lebanon Cemetery Boundary Fence\CADD\dwg\2019-121 - Exhibit.dwg 3/19/2019 8:18:50 AM